

**MUZHU**  
MINING LTD

**C O R P O R A T E P R E S E N T A T I O N**

CSE: MUZU

June 2024

# DISCLAIMER

## Third Party Data

This presentation contains information obtained by the Company from third parties, including but not limited to any information relating to Abcourt Mines Inc. and Silvercorp Metals Inc. The Company believes such information to be accurate but has not independently verified such information. The information contained herein is subject to change without notice and is based on publicly-available information, internally-developed data, and other sources. Where any opinion or belief is expressed in this presentation, it is based on the assumptions and limitations mentioned herein and is an expression of present opinion or belief only. No warranties or representations can be made as to the origin, validity, accuracy, completeness, currency or reliability of the information. Muzhu Mining disclaims and excludes all liability (to the extent permitted by law), for losses, claims, damages, demands, costs and expenses of whatever nature arising in any way out of or in connection with the information in this presentation, its accuracy, completeness or by reason of reliance by any person on any of it.

## Forward-looking Information

This presentation contains “forward-looking information” within the meaning of applicable Canadian securities laws. Forward-looking information in this presentation includes, but is not limited to, statements with respect to the Company’s intended use of proceeds and the Company’s proposed capital structure. Forward-looking information is based on certain material assumptions and analysis made by the Company, and the opinions and estimates of management as of the date such information is presented and they represent management’s best judgment based on facts and assumptions that management considers

**Tom Carpenter, P.GEO, is the Qualified Person for Muzhu Mining Ltd. as defined in NI 43-101 and has reviewed and approved the Company's technical disclosures.**

reasonable in light of its experience and perception of historical trends, current conditions and expected future developments and other factors it believes are appropriate, and are subject to risks and uncertainties. The material assumptions upon which forward-looking information in this presentation is based include, among others, assumptions with respect to required approvals, permits and financing will be obtained on a timely basis; the proposed exploration will proceed as planned; and that no unforeseen accident, fire, ground instability, flooding, labor disruption, equipment failure, metallurgical, environmental or other events that could delay or increase the cost of the exploration. The Company makes no representation that reasonable businesspeople in possession of the same information would reach the same conclusions. Although we believe that the assumptions underlying forward-looking information are reasonable, they may prove to be incorrect, and we cannot assure that actual results will be consistent with such information. Given these risks, uncertainties and assumptions, you should not place undue reliance on this forward-looking information.

Whether actual results, performance or achievements will conform to the Company’s expectations and predictions is subject to a number of known and unknown risks, uncertainties, assumptions and other factors, including risks relating to the following: Chinese government issuance of mining and related development permits, risks related to joint venture operations, the actual results of current exploration activities, conclusions of economic evaluations, changes in project parameters as plans continue to be refined, commodity price fluctuations especially in prices of silver, lead and zinc, as well as other factors. These risks, uncertainties, assumptions and other factors could cause the Company’s actual results, performances, achievements and experience to differ materially from the Company’s expectations, future results, performances or achievements expressed or implied by the forward-looking information.

The forward-looking information contained herein is presented for the purpose of assisting readers in understanding the Company’s plans and objectives, and may not be appropriate for other purposes. You should read this information with the understanding that the Company’s actual future results may be materially different from what it expects. This forward-looking information is expressly qualified in their entirety by this cautionary statement. The Company disclaims any obligation to update forward-looking information, except as required by law.

In this presentation, “Muzhu” or “Company” refers to Muzhu Mining Ltd.

# OBJECTIVE AND SHARE CAPITAL



## MUZHU MINING LTD.

Muzhu Mining Ltd. is a junior mining exploration company established in 2018 and incorporated in the Province of British Columbia. Muzhu currently holds 100% interest in its Sleeping Giant South property located in the Val-d'Or region of Quebec, Canada home to the prolific Abitibi Greenstone Belt. The property is comprised of 15,000 acres and is contiguous to the Abcourt, Sleeping Giant Mine. Abcourt has re-opened its gold processing mill at the Sleeping Giant mine site on February 13th, 2024 and recently poured its first gold/silver dore bar.

Muzhu Mining is also focused in the Henan province of China where it has executed an option agreement to acquire an 80% interest in the XWG property and also executed a joint venture agreement to acquire an 80% interest in the adjacent LMM property which has exhibited similar silver, zinc, lead mineralization as the XWG property. Both properties are surrounded by 9 active mining properties, 7 of which are operated by Silvercorp Metals Inc, all located within the heart of China's largest silver mining area known as the Tieluping Mining District.

## SHARE CAPITAL STRUCTURE

Common Shares: 35,825,549

Options: 2,800,000

Warrants: 8,901,253

**Total Outstanding-Fully Diluted: 47,526,802**



**BOARD  
AND  
MANAGEMENT**  
MANAGEMENT  
AND  
BOARD



## **Dwayne Yaretz** **CEO And Director**

Mr. Yaretz is a seasoned entrepreneur with more than 35 years experience in corporate leadership. He began his international career as Vice-President of China Power Generation Corporation and Asla Power Engineering Corporation, developing co-generation facilities in Mainland China.

Subsequently, Mr. Yaretz acted for several publicly traded companies in various capacities including President and CEO, Corporate Secretary and Chief Financial Officer and is experienced in mergers and acquisitions as well as in the financing of numerous private and public ventures.

Mr. Yaretz has structured both Initial Public Offerings and Reverse Takeovers in various business sectors, including technology, manufacturing as well as multiple mining exploration projects with properties in China, United States, Chile and Canada

Mr. Yaretz has also served on the Board of Directors with numerous companies involved in technology, clean-tech, agri-business, sustainable packaging, consumer electronics, and as well as in the mining exploration sector.



## **Vivien Chuang, CPA, CA CFO**

Ms. Chuang is a Chartered Professional Accountant (British Columbia, Canada) with more than fifteen years of experience in the resource and mining sector. Her experience includes serving as Chief Financial Officer of several resource companies.

Currently, Ms. Chuang is President of VC Consulting Corp. which provides CFO and other financial accounting and compliance services to a number of companies. Ms. Chuang articulated with PricewaterhouseCoopers LLP and holds a Bachelor of Business Administration degree from Simon Fraser University. Ms. Chuang is fluent in both English and Mandarin.

## **Anthony Tam, BSc. Eng Director And V.P. China Operations**

Mr. Anthony Tam holds a degree in Bachelor of Sciences – Engineering Physics and a degree in Bachelor of Sciences – Mining Engineering, both from Queen’s University. Mr. Tam has over 35 years of experience in the mining industry including numerous management positions in both North America and China. Mr. Tam has been instrumental in the acquisition, exploration, and development of numerous mineral properties.

He has been successful in negotiating various joint venture agreements in China, along with conducting preliminary geological and engineering assessments of mineral properties. Mr. Tam is fluent in both English and Mandarin.



## **Mr. James Stanley: Director**

Mr. Stanley is an accomplished corporate finance professional with diverse experience and a strong background in corporate start up, development and growth where he held several senior positions including COO, President and GM. Mr. Stanley was Syndicate Manager and Corporate Finance Analyst with Brookstreet Securities where he managed the syndication of more than \$100M in equity IPO's and more than \$150M in direct placements including two additional NASDAQ listings. Mr. Stanley is the current Director of Business Development at Spectrum Antimicrobials, Inc. with a targeted NASDAQ IPO in Q3 of 2024 with an expected valuation exceeding \$1 Billion USD. Throughout his career, Mr. Stanley has negotiated mining claim acquisition agreements, he has planned and staked mining claims and completed exploration and testing of several mining properties.

## **Mr. Aaron Meckler, CIM.FCSI: Director**

Aaron Meckler is an investment banker and seasoned corporate finance professional with experience in both public and private capital markets across a wide range of sectors, including real estate, technology, esports and cannabis. He has been involved in multiple public listings, and has advised companies on both buy-side and sell-side M&A. Mr. Meckler is the Co-Founder, CFO and Director of Amuka Capital, a boutique investment and merchant banking firm in Toronto, Ontario. He is also currently the CFO and board member to multiple reporting issuers and public companies in Canada.



## **Mr. James C. Tworek:**

Mr. Tworek has worked in banking and finance for the past 23 years. This experience brought about a solid repertoire with business development, business start-up acumen, venture capital investment, underwriting and corporate finance. Mr. Tworek is the CEO of Element79 Gold Corp (CSE:ELEM, OTC: ELMGF, FSE: 7YS), a Canadian precious metals mining company with a growing portfolio of global assets; Co-founder, President and Director of Gaia Grow Corporation (CSE:GAIA, FSE:GGO) and a Director of Florence One Capital, a TSS.V capital pool company. In addition to those active roles, he has sat as an Independent director of other publicly traded companies in Canada over the past five years.

## **Mr. Paul McGuigan, P.Geo:**

Mr. McGuigan is a Professional Geoscientist with 49 years of international experience in mineral exploration, deposit evaluation, mine operations, and corporate governance. As a geochemical researcher, he developed mineral separation techniques commonly employed in exploration and heavy mineral sands mapping. For the last 36 years, Mr. McGuigan has managed the Cambria group of consulting companies worldwide. He was a founder of Diamond Quest Laboratories. He has held directorship positions in several publicly listed mining companies. He led extensive underground rehabilitation and exploration programs at the Silbak Premier Au-Ag and Dolly Varden Ag mines. In civic service, he has served as a member of the Consulting Practice and the Geoscience Committees of the Engineers and Geoscientists of BC, as a director of the BC Neurological Centre, and, lately, as past-president / director of the BC Centre for Ability Foundation.

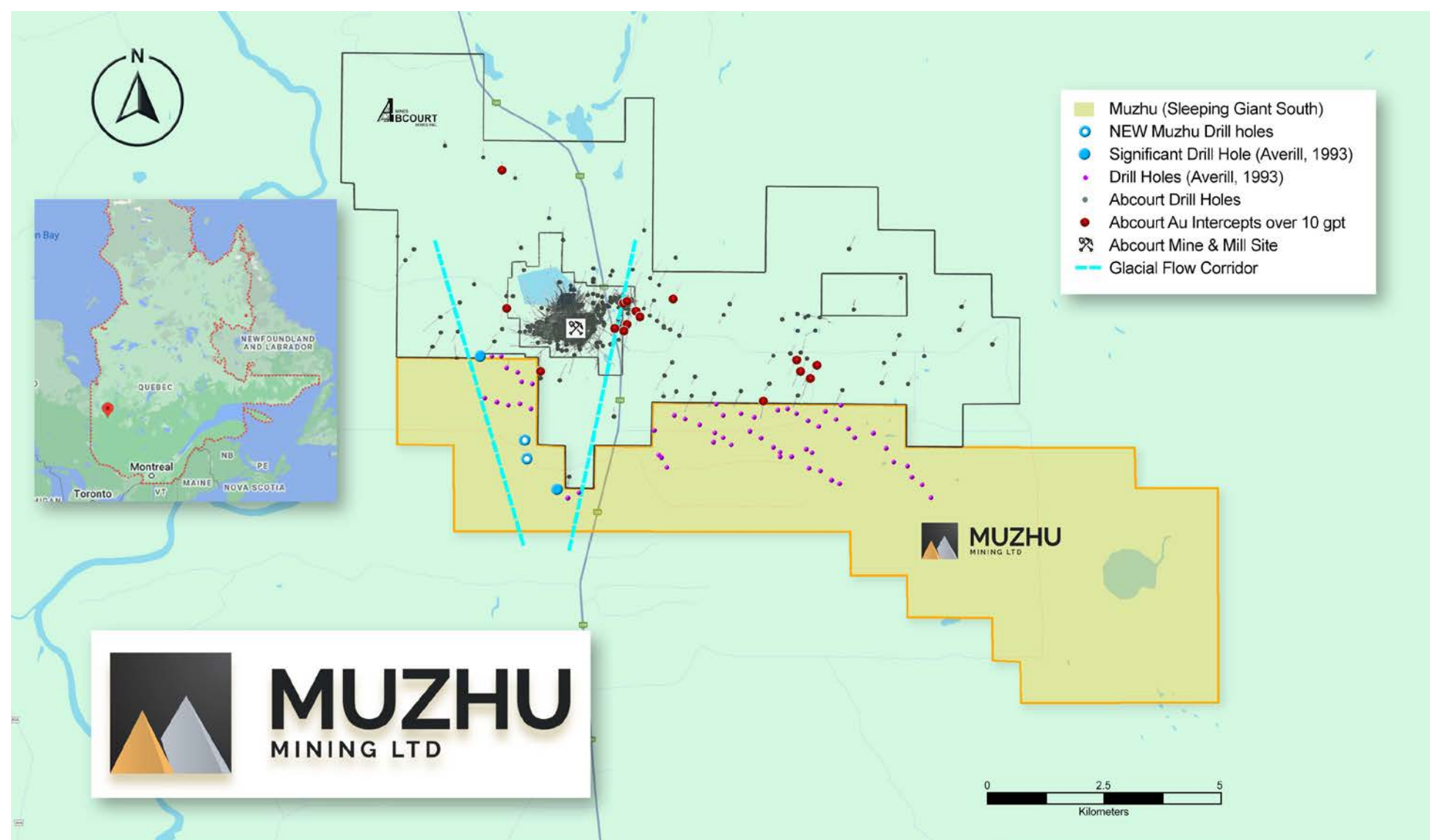




# PROJECTS



## Location & Infrastructure: Abitibi Greenstone Belt

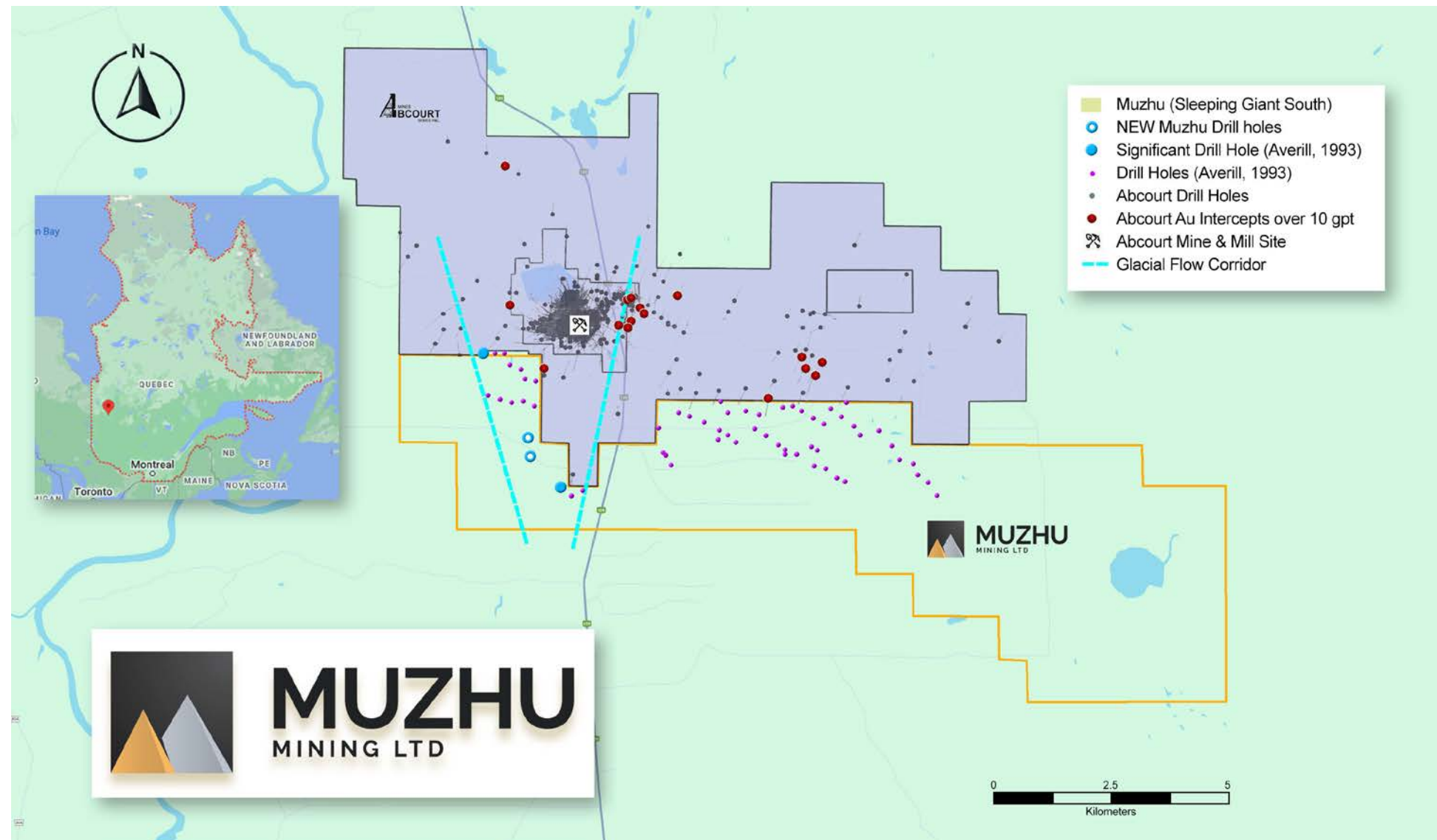


## Sleeping Giant South Property (Muzhu):

- Contiguous claims (15,000 acres)
- 43-101 Technical Report Completed Dec. 2020
- MAG and IP surveys completed
- Results pending from two drill holes
- Historical drill results, MAG survey and IP being used to create new geological database to advance exploration programs
- Adjacent to Abcourt's currently operating Sleeping Giant Mine and Mill
- Abcourt's drill results at Muzhu property border greater than 10 g/t au



## Abcourt: Sleeping Giant Mine & Mill



### Sleeping Giant Mine (Abcourt):

- First dore (gold/silver) pour, April 2024
- 173,000 oz indicated resources at average grade of 7.14 g/t au
- 248,000 oz of inferred resources at average grade of 8.74 g/t au
- Modelling of 846 distinct gold structures from 1.19 million meters of drilling and underground exploration
- 2022 drilling result of 125.52 g/t au over 0.80 meters
- Reopened Mill February, 2023
- Drill program to enhance resource in progress

# PROJECTS | HENAN, CHINA



## XWG & LMM Properties

Henan Province, China

### Option to acquire up to 80% of the XWG property...

Located in western Henan Province, within the heart of China's largest silver mining area known as the Tieluping Mining District.

Muzhu can earn an 80% interest in the XWG property by incurring C\$3M in exploration expenditures and issuing 3.75M shares over a period of three years.

### Option to acquire up to 80% in Joint Venture LMM property...

Contiguous to XWG property and Silvercorp's operating mines.

Luoning County Muzhu Mountain Lead & Silver Mine Company will contribute the mining rights including valid certificates as its 20% contribution to the Joint Venture Company, Muzhu Mining's wholly-owned Chinese subsidiary, Luoyang Sow International Mining Company Ltd. Luoyang can will earn an 80% interest in the LMM property joint venture by incurring C\$4M in exploration expenditures over a period of three years.

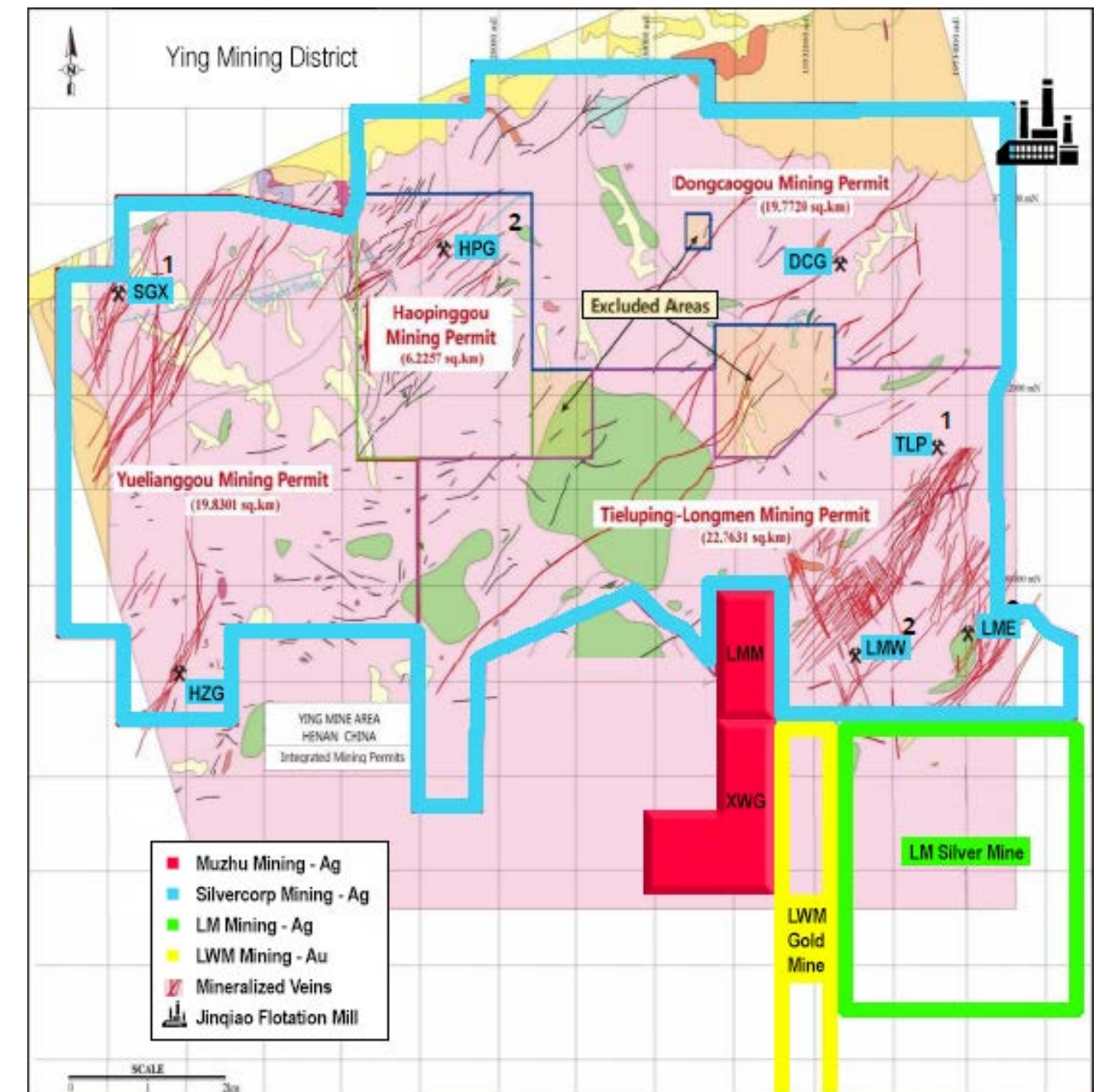
# PROJECTS | HENAN, CHINA

## Exploration Work LMM Property

- The LMM Joint Venture Agreement was signed January 24, 2023
- LMM is immediately north and adjacent to Muzhu's XWG property
- The company is compiling historical LMM work data
- Initial information shows similar mineralization as XWG and Silvercorp's LMW

## Concessions & Infrastructure

- Good infrastructure, water, power, road access, skilled workforce.
- The Jinqiao floatation mill, 9 km away has a processing capacity of up to 1,000 tonnes per day (t/d)
- Encircled by Silvercorp's SGX, HPG, HZG and DCG Mines and directly adjacent to the LME, LMW, and TLP Mines as well as two Chinese owned gold and silver mines to the south and southeast (LWM & LM)
- Since 2006, Silvercorp has produced more than 80 million oz Silver and 1 Billion lbs of Lead and Zinc with current Measured and Indicated resources of 210.2 M oz and 126.3M oz of Inferred Silver
- Silvercorp is the largest domestic primary silver producer in China, the third largest silver-producing country in the world



# C O N T A C T

## ADDRESS:

**Suite 1400 - 1125 Howe Street Vancouver, BC, V6Z 2K8**

**MUZHUMINING.CA**

**[INFO@MUZHUMINING.CA](mailto:INFO@MUZHUMINING.CA)**

**Dwayne Yaretz, CEO, Director – Muzhu Mining LTD**

**+1 (778) 709-3398**